



NE1GHOUBRHOOD POLICING

Supporting local communities, targeting crime together

Soham Neighbourhood Profile Update

September 2007



Contents

1. Introduction
2. Executive summary
3. Previous issues identified and actions taken
4. Neighbourhood trends in crime and disorder
5. Trends in crime and disorder by Ward
6. Recommendations
7. Appendix

1. Introduction

Aim

The aim of the neighbourhood profile update is to identify ongoing and emerging crime and disorder issues in the neighbourhood in order to facilitate effective policing and partnership working in the area.

Purpose

The purpose of the neighbourhood profile update is to provide up-to-date information on neighbourhood issues to multi-agency neighbourhood panels and neighbourhood policing teams, so that issues can be identified and effectively prioritised.

Methodology

This document was produced using the following data;

- Crime data 01/06/07 to 31/08/07 and as a comparison data from 01/03/07 to 31/05/07 and 01/06/06 to 31/08/06.
- Incident data 01/06/07 to 31/08/07 and as a comparison data from 01/03/07 to 31/05/07 and 01/06/06 to 31/08/06.
- Information from Police action plans, September 2007.
- Consultation with the Soham Neighbourhood team, September 2007.

2. Executive summary

The level of crime and disorder has generally decreased in the neighbourhood during the past 3 months and crime is especially low when compared to the same period last year. Vehicle crime in Soham South has recently emerged as an issue as has anti social behaviour and crime associated with the night time economy.

3. Previous issues identified and actions taken

Anti social behaviour in Soham and Isleham Villages

- Officers have carried out over 240 patrols of areas which have been highlighted as priorities.
- Patrols were predominantly focussed to the areas of Soham Village College playing fields, St Andrews Primary School, Fordham recreation ground, Isleham recreation ground, Weatheralls Medical Centre and Weatherall Primary School.
- Police have been in regular contact with staff at Soham Village College about ASB issues.
- During the patrols officers dealt with numerous groups of youths, who were predominantly not causing any problem, however officers also dispersed a group of rowdy youths, issued a formal warning for cannabis possession, asked a group of youths to clear up their rubbish, moved on a group of youths as they were too old to be on play equipment and confiscated alcohol from a 16 year old.
- A group of youths were caught after using the swimming pool at St Andrews Primary School.
- A local youth serving an anti social behaviour order was arrested twice for breaching his ASBO.
- Officers dealt with a number of reports of vehicle related ASB and issued a section 59 to an individual for using a quad bike anti socially.
- The increased number of patrols focusing on anti social behaviour has reduced the proportion of ASB incidents which are related to youths from almost a half in the previous period to a third in this period. This is particularly good news as the past 3 months have included the school summer holidays, a time normally associated with a rise in youth related ASB.
- Police attempted to improve relations with local children by organising a rounders match between officers and children from Soham Village College. Despite officers attempts this unfortunately did not take place.
- Officers also attempted to organise a competition for local youths to design police themed graffiti which would then be painted on to the garages at Ely police station. As yet attempts to arrange this have been unsuccessful.

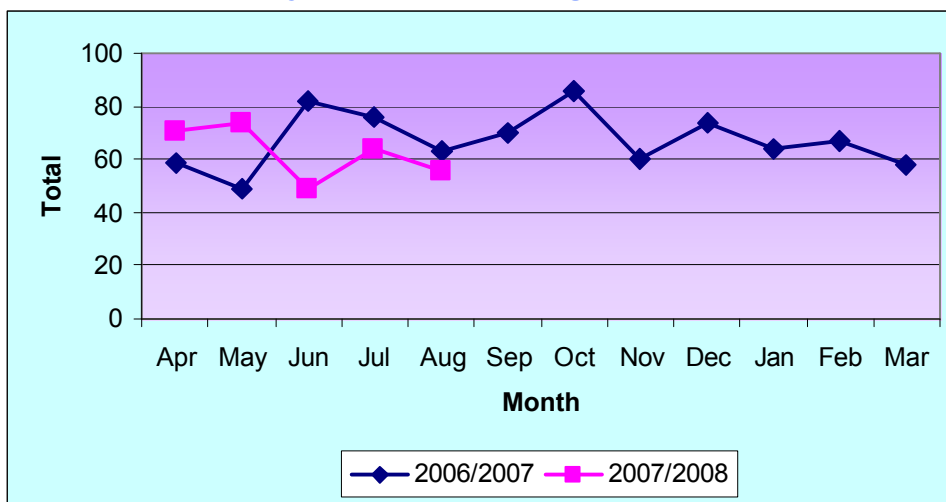
Speeding across the neighbourhood

- Officers carried out 18 speed checks across the neighbourhood during the period, totalling 14 and a quarter hours.
- Six speed checks were carried out in Fordham, 5 in Soham, 2 in Chippenham, Wicken and Isleham and 1 in Kennett.
- Speed checks were carried out at various times, however the focus was towards the evening rush hour.
- Although the police offered all of the Parish Councillors the opportunity to go out on a speed check, only one took up this offer.
- During the speed checks officers prosecuted a motorist for driving at 69 mph in a 30 limit area and issued 10 tickets for speeding.
- At least 8 words of warning were given to drivers about excess speed.

- Two drivers were also arrested for drunk driving.
- Officers also issued 4 tickets for not wearing a seat belt and 1 for using a mobile phone whilst driving.
- As well as speeding, officers focussed upon illegal parking and gave 42 fixed penalty notices for parking offences.
- A PCSO raised the issue of hanging baskets blocking the 30 minute only waiting bay signs in Churchgate Street and High Street, Soham. This has made it difficult for officers to give tickets and the issue has been passed on to the council.
- Eleven tickets were also given out to motorists for using untaxed vehicles.

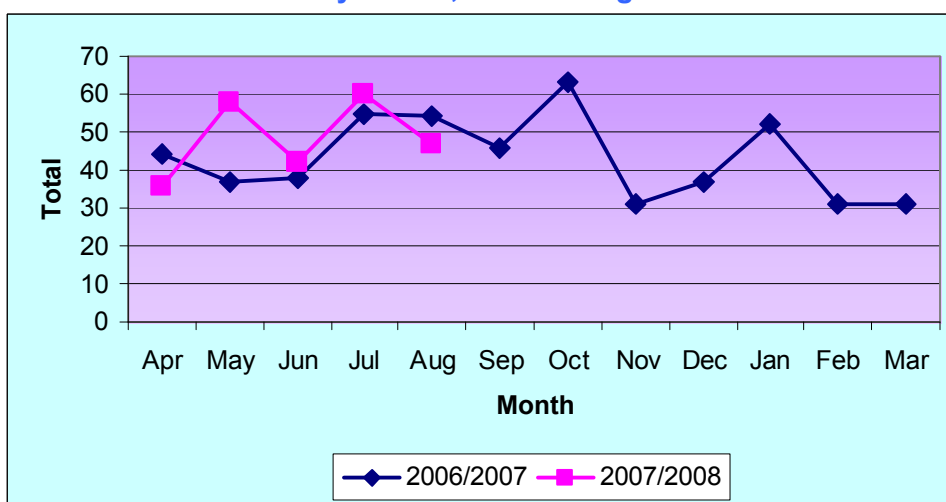
4. Neighbourhood trends in crime and disorder

Crimes by month, Soham neighbourhood area



- Total crime has been quiet in each of the neighbourhood’s wards during the period, especially when seasonal comparisons are made with the same period last year.

ASB incidents by month, Soham neighbourhood area



- Anti social behaviour has been slightly higher during the period when compared to the same period last year and when compared to the 3 months preceding this update. This is predominantly due to anti social behaviour in Soham North, which has increased dramatically during the period.

5. Trends in crime and disorder by ward

Fordham Villages

- Total crime and disorder has been low in the Fordham Villages ward, with 36 crimes reported during the period and only 12 anti social behaviour incidents.
- Criminal damage was the most common offence type with 7 during the period.
- Dwelling burglary has emerged as an issue to an extent within the ward with 5 during the period.

Isleham

- Crime and disorder has been very low within Isleham during the past 3 months, with only 17 crimes and 12 ASB incidents reported.
- The most common crime type was non dwelling burglary, of which there were 3. Two of these were burglaries of sheds or garages.

Soham North

- The level of crime has been relatively low in the Soham North ward, with 29 offences reported during the period, however anti social behaviour has increased substantially.
- The most frequently occurring offence was other theft of which there were 9, a variety of items were taken however vehicle trailers were targeted on 2 occasions.
- There have been some issues around drug supply, especially around 1 address and the area around the football club. Police are aware of this and are working to stop the drug supply.
- Anti social behaviour has been high in the ward. There was a hotspot of 8 incidents in Poppy Fields, these largely related to youths congregating in a large group and causing disorder, including the use of a mini moto.
- There were 2 incidents reported of youths using mini motos in Bushel Lane.
- There was also somewhat of an ASB hotspot in Queensway, where 5 incidents were reported, these included youths riding mini motos, noise complaints, criminal damage and a drunk male causing problems.

Soham South

- The level of crime and disorder in Soham South is far greater than in any of the other wards, however when compared to previous periods the level during the past 3 months is quite low.
- The most commonly occurring offence was criminal damage, of which there were 18 during the period. This is however a dramatic reduction when compared to the previous 3 months when there were 30 offences.
- The criminal damage offences were most frequently windows being smashed, 3 of these occurred along the High Street, and all of these offences took place on Friday or Saturday nights.
- There were 14 violent crimes reported, however these were predominantly domestic in nature.
- Vehicle crime has been an issue within the Soham South ward, with 15 offences during the period and a further 11 in September to date (until the 25th).
- Theft from shop has increased during the period with 5 reported, items taken and stores targeted were varied.
- ASB has remained at a similar level to previous periods, with 77 reported during the 3 months.

- The main hotspot of ASB was the High Street and Churchgate Street, with incidents largely seeming to be associated with the night time economy as they predominantly occurred on Friday and Saturday nights.
- Despite the frequent patrols in the area there was still a cluster of 4 incidents of youths causing ASB in the grounds of Soham Village College, including 1 instance of youths riding a mini moto on the school playing fields. There was also 1 report of youths using the swimming pool at the nearby St Andrews Primary School when not permitted.
- The Queensway estate and the areas linked by foot paths, including the Weatheralls has emerged as somewhat of a hotspot for various types of ASB including youth related incidents and neighbour disputes.

6. Recommendations

Police

- Consideration should be given to adopting alcohol related crime and disorder in Soham as a priority, particularly as the upcoming period includes Halloween, Bonfire night and the run up to Christmas. This should have 2 focuses; adults causing crime and disorder on Friday and Saturday nights and youth drinking.
- Vehicle crime particularly in Soham South has been an issue in the period with the level also picking up further in September. This should be given serious consideration as a priority as it is important to stop this trend before it escalates.
- To maximise the impact of speeding as a priority an individual village should be selected by the panel and speed checks should be focused entirely on this location during the period. Traffic calming measures and a neighbourhood speed watch should also be considered as part of a long term solution.

Partners

- Partner agencies and in particular the council, the housing association and the environmental health agency should be given the task of improving the quality of life for residents of the Queensway estate.
- Partner agencies should also begin working towards creating a location where youths can legally ride motorcycles as this will greatly reduce the mini moto related disorder in Soham.
- Youths have expressed the desire to have a wall built in the recreation ground to use as a football goal and this should be explored as a possibility.

7. Appendix

Appendix 1. Total neighbourhood crime by ward

| Ward | 06/06 to 08/06 | 03/07 to 05/07 | 06/07 to 08/07 |
|----------------------------|----------------|----------------|----------------|
| Fordham Villages | 52 | 40 | 36 |
| Isleham | 38 | 20 | 17 |
| Soham North | 48 | 33 | 29 |
| Soham South | 83 | 110 | 87 |
| Neighbourhood Total | 221 | 203 | 169 |

Appendix 2. Total neighbourhood crime by offence type

| Crime Type | 06/06 to 08/06 | 03/07 to 05/07 | 06/07 to 08/07 |
|------------------------------------|----------------|----------------|----------------|
| Burglary Dwelling | 15 | 6 | 11 |
| Burglary Other | 40 | 21 | 18 |
| Violence | 25 | 31 | 25 |
| Theft of Vehicle | 17 | 12 | 11 |
| Theft from Vehicle | 14 | 26 | 14 |
| Pedal Cycle Theft | 3 | 3 | 3 |
| Theft From Shop | 2 | 5 | 5 |
| Criminal Damage | 45 | 46 | 30 |
| Other Crime | 60 | 53 | 52 |
| Total Crime | 221 | 203 | 169 |
| Domestic Violence Incidents | 26 | 23 | 18 |
| Alcohol Related Incidents | 18 | 23 | 33 |
| Total Anti Social Behaviour | 147 | 125 | 149 |

Appendix 3. Total Fordham crime by offence type

| Crime Type | 06/06 to 08/06 | 03/07 to 05/07 | 06/07 to 08/07 |
|------------------------------------|----------------|----------------|----------------|
| Burglary Dwelling | 6 | 2 | 5 |
| Burglary Other | 14 | 6 | 5 |
| Violence | 7 | 3 | 2 |
| Theft of Vehicle | 3 | 2 | 3 |
| Theft from Vehicle | 7 | 7 | 0 |
| Pedal Cycle Theft | 0 | 0 | 0 |
| Theft From Shop | 0 | 0 | 0 |
| Criminal Damage | 4 | 7 | 7 |
| Other Crime | 11 | 13 | 14 |
| Total Crime | 52 | 40 | 36 |
| Domestic Violence Incidents | 8 | 7 | 1 |
| Alcohol Related Incidents | 2 | 2 | 5 |
| Total Anti Social Behaviour | 28 | 14 | 12 |

Appendix 4. Total Isleham crime by offence type

| Crime Type | 06/06 to 08/06 | 03/07 to 05/07 | 06/07 to 08/07 |
|------------------------------------|----------------|----------------|----------------|
| Burglary Dwelling | 1 | 1 | 1 |
| Burglary Other | 7 | 5 | 3 |
| Violence | 5 | 2 | 2 |
| Theft of Vehicle | 8 | 0 | 0 |
| Theft from Vehicle | 0 | 2 | 1 |
| Pedal Cycle Theft | 0 | 0 | 1 |
| Theft From Shop | 1 | 1 | 0 |
| Criminal Damage | 5 | 4 | 1 |
| Other Crime | 11 | 5 | 8 |
| Total Crime | 38 | 20 | 17 |
| Domestic Violence Incidents | 4 | 0 | 1 |
| Alcohol Related Incidents | 3 | 2 | 1 |
| Total Anti Social Behaviour | 16 | 10 | 12 |

Appendix 5. Total Soham North crime by offence type

| Crime Type | 06/06 to 08/06 | 03/07 to 05/07 | 06/07 to 08/07 |
|------------------------------------|----------------|----------------|----------------|
| Burglary Dwelling | 2 | 1 | 0 |
| Burglary Other | 13 | 0 | 3 |
| Violence | 4 | 7 | 6 |
| Theft of Vehicle | 0 | 4 | 4 |
| Theft from Vehicle | 3 | 8 | 2 |
| Pedal Cycle Theft | 1 | 2 | 0 |
| Theft From Shop | 0 | 0 | 0 |
| Criminal Damage | 10 | 5 | 4 |
| Other Crime | 15 | 6 | 10 |
| Total Crime | 48 | 33 | 29 |
| Domestic Violence Incidents | 7 | 5 | 5 |
| Alcohol Related Incidents | 1 | 4 | 8 |
| Total Anti Social Behaviour | 21 | 26 | 48 |

Appendix 6. Total Soham South crime by offence type

| Crime Type | 06/06 to 08/06 | 03/07 to 05/07 | 06/07 to 08/07 |
|------------------------------------|----------------|----------------|----------------|
| Burglary Dwelling | 6 | 2 | 5 |
| Burglary Other | 6 | 10 | 7 |
| Violence | 9 | 19 | 14 |
| Theft of Vehicle | 6 | 6 | 4 |
| Theft from Vehicle | 4 | 9 | 11 |
| Pedal Cycle Theft | 2 | 1 | 2 |
| Theft From Shop | 1 | 4 | 5 |
| Criminal Damage | 26 | 30 | 18 |
| Other Crime | 23 | 29 | 21 |
| Total Crime | 83 | 110 | 87 |
| Domestic Violence Incidents | 7 | 11 | 11 |
| Alcohol Related Incidents | 12 | 15 | 19 |
| Total Anti Social Behaviour | 82 | 75 | 77 |